

# *sofigs inc.* TAKE OFF

THE OFFICIAL PUBLICATION

VOLUME 1, ISSUE 2

OCTOBER 2010



## 2nd Annual Convention

November 26, 2010

## INSIDE

### NEWS

#### Jeddah

Computer Aided  
Construction PM | Page 04

New Jeddah Chapter  
Officers | Page 09

#### Riyadh

Bowling Tournament 2010 |  
Page 04

Timberline & Takeoff  
Seminar | Page 05

Saudi Council of Engineers |  
Page 06

New Labor Bill in Offing |  
Page 06

Riyadh Special Board Exam |  
Page 08

New Riyadh Chapter  
Officers | Page 09

### FEATURES

Orbit Middle East | Page 10

Pulse™ Smart Pen |  
Page 11

What are CE, QS & PM? |  
Page 12

Recruitment Agencies |  
Page 12

### MEMBERSHIP

New Members & Statistics |  
Page 14





## Takeoff E-Newsletter

The Official Publication of the Society of Filipino Quantity Surveyors Inc.

SOFIQS Inc. is an organization of Filipino Professionals (Civil Engineers, Electrical Engineers, Mechanical Engineers, Electronic & Communications Engineers and the like and Architect) working as Quantity Surveyors or Cost Estimators worldwide with Chapters located in Jeddah and Riyadh.

Our E-newsletter will focus on the Society's current events and development, address topics that are of great interest to its members, increase awareness and visibility in the industry and stimulate interaction for the betterment of the Quantity Surveying profession.

The title is adapted from the commonly used word in the Quantity Surveying profession, "Takeoff", which represents one of the most important functions performed in any business enterprise. In the construction industry, the quality of performance of this function is paramount to the success of the parties engaged in the overall management of capital expenditures for construction projects.

SOFIQS Inc. reserves the right to edit the articles to fit the general context of the Newsletter.

The views expressed in the articles are not necessarily those of the SOFIQS Inc., which accepts no responsibility for accuracy of information, errors, omissions or statements made within the publication, and rejects any claims out of any action which a company or individual may take on the basis of the information contain herein.

If you have articles, opinions or information to share, email us at: [sofiqs@yahoo.com](mailto:sofiqs@yahoo.com).

### NATIONAL Yahoo Group

<http://groups.yahoo.com/group/SOFIQS/join>

### Riyadh Chapter Yahoo Group

[http://groups.yahoo.com/group/SOFIQS\\_RIYADH/join](http://groups.yahoo.com/group/SOFIQS_RIYADH/join)

# EDITOR'S CORNER

## How Much Does Your Project Costs?

With enticing salary packages and various perks, it has attracted many of us to relocate and work here in the Middle East. But have you ever wondered how much does your project cost? Here, pre and post-contract come into play.

Now we all know that the recent financial crisis brought a new business environment in the construction industry even if Saudi Arabia is rock-solid financially. Wide array of projects from power and desalination plants, substations, housing and hospitals are on top of the priority list for tender in the next two years inside the Kingdom. Tenderers are scrambling, from general contractors to sub-contractors getting an edge against each other.

Under the pre-contract, proposing the optimum overhead cost up to the material, labor and equipment costs based on cost derivations drawn from accurate estimate and available information in drawings is the vital cog in winning bids. Value of the project is conceived in this stage. Take note, not all bids are meant to win, companies have different ploy, they may either bid to win, bid to lose or bid for the sake of joining.

Under the post-contract, based on the General Conditions of Contract or Subcontract, variation strategies can be establish to anticipate design changes and term of extension can be proposed for delayed projects. This is the period wherein people involve in contracts and claims are stringent on the accomplishment of the project. Too much leeway on work extension may cause and develop a bad culture within the duration of the construction. For so, based on the project value tagged during the bid, it may shoot up or decrease down either way.

In reality, with a low-cost manpower in the market and 'best price' raw materials assembled by said low-cost labour, there is a misconception in the significance of these project expenses especially in this part of the region. Labor abounds and wastage on materials unmonitored.

Recently, the Saudi government issued a directive in support of Saudi Council of Engineers' objective to improve the Kingdom's engineering standards which plays an important role in the country's development.

Now, being part of this industry, this is a call to raise our benchmark of Filipino excellence and sustain our competitive edge. It is high time to meet and be connected specially for us, the Quantity Surveyors and the Cost Estimators.

To sum it up, SOFIQS won't lead neither it won't follow but it will be at your side, through your full support, together we will strive. - **end**

**MARK FLORES, CE** | EDITOR

[mlr\\_flores0088@yahoo.com.ph](mailto:mlr_flores0088@yahoo.com.ph)

To Email the Editor, please address your letter to: [sofiqs@yahoo.com](mailto:sofiqs@yahoo.com). Please provide your full name and address, stating clearly if you do not wish us to print them.





# SOCIETY NEWS

## The History at a Glance and a View of the Present

### October 18, 2008

SOFIQS, Inc. was organized and founded by Engr. Eddie R. Pilaspilas of Saudi Oger Ltd. in Jeddah, Kingdom of Saudi Arabia. The society was initially formed by the Quantity Surveyors of MEP Invoicing Group and Civil Works Group in King Abdullah University of Science and Technology Project. It was started with 50 founding members from different companies in the Kingdom of Saudi Arabia.

### March 1, 2009

The society was registered and recognized by the Philippine Consulate in Jeddah as one of the Filipino Community Organizations in the western region of Saudi Arabia.

### June 19, 2009

The society was registered in the Securities and Exchange Commission (SEC) in the Philippines as a non-stock, non-profit organization under the name SOFIQS Inc.

### November 27, 2009

The original KSA Chapter was officially divided to form two (2) new Chapters, the Jeddah Chapter and the Riyadh KSA Chapter.

Organized its 1st Annual Convention hosted by Jeddah Chapter.

### January 9, 2010

Riyadh KSA Chapter was registered and recognized by the Embassy of the Republic of the Philippines in Riyadh as a legitimate Filipino community association.

Organizing Continued Professional Education to facilitate the needs of members for skill upgrade. Right, Timberline Seminar (see page 5).



Encouraging company-based membership. Left, the GPCD team of Saudi Oger Ltd., one of the companies with a handful of members.

Advancing the common goal and vision of the Society. Right, the Planning Session of the current and incoming officers.



Establishing relationship among members and affiliates. Left, the Ten-pin Bowling Tournament joined by sports-loving members and friends of the Society. (see page 4).

Unifying Filipino Quantity Surveyors and Cost Estimators locally and internationally. Below are QS's working on claims, estimating, tendering and contract changes in PNU Project.





# SOCIETY NEWS

## Computer Aided Construction Project Management



Jeddah - The Society of Filipino Quantity Surveyors (SOFIQS Jeddah Chapter) has conducted a seminar/training in Computer Aided Construction Project Man-

agement Using Primavera 6 from September 17 – October 15, 2010 at Lapaz Batchoy Restaurant in Jeddah, KSA.

The seminar is in line with the Society's Professional and Training Development Program to develop and enhance the capabilities of its members. It was participated by 32 SOFIQS members and non-members.

The seminar was spearheaded by the SOFIQS Jeddah Chapter President Ric Dimarucut & Vice-President Orlando Magsayo Jr. together with the Officers of Jeddah Chapter.

The lecturer/ resource speaker is Engr. Mamerto Balanon, a Planning Engineer of Saudi Bin Laden. The seminar was ended up with distribution of Certificates for the participants and awarding of certificate of appreciation to the Lecturer.

**- end**

## SOFIQS - Riyadh Chapter Bowling Tournament 2010



Riyadh - The local chapter based here in the capital city of Saudi Arabia organized a one-day ten-pin bowling tournament held at Al-Khozama Bowling Center beside the iconic Faisaliyah Tower last October 22, 2010.

The event, was organized in celebration of SOFIQS Inc.'s 2nd Year Anniversary. It have lured 34 participants and was graced by the officers from the National Board. Everyone felt the excitement and

thrill in knocking down the pins especially for the neophytes of the game.

It was a tight race in the double elimination round, with everybody trying to outscore one another to enter the final 10.

At lane number 2, Fernando Nacu scored a turkey (three strikes in a row), which have helped him increase his output to enter the Finals. Other players in the Final 10 were:

Mario Ancheta - 312, Mario Velasquez - 270, Mat Dicka - 277, Eddie Manzano - 318, Eric Gonzales - 254, Dennis Rodriguez - 257, Allan Magadia - 240, Glen Hironondo - 235 and Steve Marcial - 238.

The finalists have played a do-or-die game. After the smoke have cleared, Mario Ancheta of Saudi Oger Ltd. bowled a total of 160 points to top score the Finals, not far behind were Mario Velasquez and Mat Dicka, the second and third placer respectively.

The rest of the standings are as follows: 4) Eddie Manzano, 5) Eric Gonzales, 6) Dennis Rodriguez, 7) Fernando Nacu, 8) Steve Marcial, 9) Allan Magadia and 10) Glen Hironondo.

The winners were awarded with medals, exclusive SOFIQS mug for the top 5 and trophy plus cash prize for the champion.

Though exhausted, the event was a success, kudos to the officers. **- end**

# SOCIETY NEWS

## Sage Timberline Office Estimating & On Screen Takeoff Seminar a Success!



Riyadh – In coordination with Orbit Middle East, solution provider for the AEC Industry based in Jeddah, The Society of Quantity Surveyors Inc. – Riyadh Chapter have organized an orientation seminar on Sage Timberline Estimating and On-screen Advance Takeoff® Software last September 24, 2010 at White palace Hotel.

Sage Timberline Estimating offers a number of database options to choose from, you determine the level of database setup help and customization needed. Or, if you'd prefer, choose from a number of industry specific databases that can be used literally "out of the box". Many include current pricing while others offer the ability to fully customize pricing. For those who choose to build their own unique, company specific database, we have a solution there too.

The Database Builder Wizard walks you through the necessary

steps of structuring and setting up your database more quickly and efficiently than you ever thought possible. Using a number of built-in productivity tools, you'll find yourself producing estimates in significantly less time that it takes you now. And when you spend less time crunching numbers and more time analyzing and fine tuning your estimates, you'll win more profitable bids. And with complete Sage Timberline Office integration, estimate details can be passed to accounting for budget vs. actual tracking, to Project Management for change order generation, as well as to third-party scheduling programs.

Sage Timberline® Office ePlan Takeoff connecting Timberline Estimating software with On Center's On-Screen Takeoff™ application, lets you generate counts and quantity takeoffs directly from electronic drawings for instant use in your estimates. ePlan Takeoff gives you the ability to quickly transfer project dimensions including lengths, areas, and volumes.

Mr. Rashid Maliyakkal, the Manager for the Orbit Middle East, together with Mr. Wissam Harb, Key Accounts Manager for the same company, delivered on the topics for the seminar.

Orbit Middle East is a leading provider of best-of-breed solutions for businesses across the spectrum of

the real estate and AEC industries. Orbit Middle East offers as well a full range of Professional Services, including training, implementation assistance, and customization, with an objective to providing complete best in class solutions for project management, scheduling, estimating, quantity takeoff, construction accounting, property management, and CAD.

At the end of the seminar, giveaways were raffled including the Pulse™ Smartpen, one of the products offered by Orbit Middle East (see page 11), which was won by Engr. Philip Yunting of Saudi Bin Laden Group.

The seminar was wrapped up with the awarding of Plaque of Appreciation to Mr. Maliyakkal and Mr. Harb, followed by the distribution of Certificates of Completion for the participants and Photo ops with the Speakers and the organizers. – **end**





# SOCIETY NEWS

## All Foreign Engineers have to Register with SCE | *Contributed by Eric Gonzales & Eleazar Mendoza*



Foreign engineers have to be registered with the Saudi Council of Engineers for the issuance and renewal of their iqamas (resident permits), according to a directive issued by Second Deputy Premier and Minister of Interior Prince Naif.

Abdullah Bugshan, chairman of the council's board of directors, thanked Prince Naif for his support to the organization and said the new directive would help improve the Kingdom's engineering standards.

"We are happy over the government's desire to develop the engineering profession, which plays an

important role in the Kingdom's development," he said.

Bugshan said the government passed a law eight years ago to regulate the council's activities. "The council was established to improve the standard of the engineering profession in the country," he said.

Bugshan said the council would review the academic and professional qualifications of engineers. "We'll also encourage engineers to apply the best professional practices," he added.

He said the ministries of interior, civil affairs, higher education, labor, planning and economy, municipal and rural affairs and water and electricity have approved the council's professional endorsement. Organizations such as Saudi Aramco, the Royal Commission for Jubail and Yanbu, the Saline Water Conversion Corporation and King

Abdulaziz City of Science and Technology have also approved the endorsement plan.

"As a result, a large number of engineers have already registered with the council," Bugshan said. He added that the Arab and Gulf engineers' federations have given their support for the Kingdom's endorsement program.

"The Federation of Engineering Institutions in Islamic Countries has also welcomed the principles adopted by the Kingdom for professional endorsement. Most Islamic countries have expressed their readiness to adopt similar regulations," he said. - **end**

You may visit the website below for the application form.

<http://www.saudieng.org/Pages/Default.aspx>

*Reference:*

*Arab News, Jeddah, August 26, 2010*

## New Labor Bill in Offing | *Contributed by Eric Gonzales*

The Ministry of Labor unveiled a new bill that would unify contracts in the private sector along with a set of measures that are to be implemented in the future. The new set of measures aims to address workplace relations between the employee and the employer in the private sector.

The ministry's new measures will focus on reducing labor disputes in the workplace, especially on payment issues. It will also address issues pertaining to job transfers, especially with regard to an employee seeking to change jobs.

The ministry also emphasized that the employment contract has to be made in duplicate with each party retaining a copy of the contract. The Ministry of

Labor also said the new measures would include the caveat that no owner of a private sector company in Saudi Arabia shall be able to terminate an employee from service due to health problems. Also, the employees can now combine their annual leave to their sick leave.

Business owners will now be required to furnish their employees and workers the termination letter before the actual firing occurs. No owner shall transfer their employees to another location without the employees prior knowledge unless it is expressly written into the contract and signed by both parties.

The new bill states that an employee has the right to leave the job if there are any contractual

violations, if the employer fails to pay the employees salary or subjects a worker to abuse.

Some measures are aimed at streamlining payment of salaries. The Ministry of Labor now states that an employer shall not change their employees status from a monthly-based salary to an hourly or daily wage without the employees agreement.

The bill also affirms the business owners rights to terminate the contract of their workers without compensation in cases of assault or fraud. Employers can terminate employees for disclosing company secrets. - **end**

*Reference:*

*Sultan Al-Tamimi, Arab News, Jeddah, July 9, 2010*





**SOFIQS Inc.**

**SOCIETY OF FILIPINO  
QUANTITY SURVEYORS Inc.**

PROUDLY INVITES YOU TO ATTEND THE

## **2<sup>nd</sup> ANNUAL CONVENTION**

**“Rising to the Challenge,  
Sustaining Filipino Excellence”**

**Election of National Board of Directors  
Oath Taking of CHAPTER Officers  
National General Membership Assembly**

**HOSTED BY**



**SOFIQS Inc.**  
**RIYADH CHAPTER**

**Holiday Inn - Olaya  
November 26, 2010, 2:00PM to 8:00PM  
Riyadh, Kingdom of Saudi Arabia**

**For inquiries and sponsorship, please send email to  
[sofiqs\\_riyadh@yahoo.com](mailto:sofiqs_riyadh@yahoo.com)  
or contact the following officers:**

**Eng. Allaine Santos, [asantos@saudioger.com](mailto:asantos@saudioger.com), 0564892136  
Eng. Junry Casul, [juncasul@yahoo.com](mailto:juncasul@yahoo.com), 0540984927  
Arch. Fernando Nacu, [nandinacu@yahoo.com](mailto:nandinacu@yahoo.com), 0530181035  
Eng. Eric Gonzales, [msmic\\_riyadhksa@yahoo.com](mailto:msmic_riyadhksa@yahoo.com), 0558128745**

**LET US MEET AND BE  
CONNECTED!!!**

**Visit:  
[www.sofiqs.com](http://www.sofiqs.com)**



# SOCIETY NEWS

## Special Professional Licensure Board Exam in Riyadh



REPUBLIC OF THE PHILIPPINES  
**Professional Regulation Commission**



### SPECIAL LICENSURE BOARD EXAMINATION

Board of Accountancy : Board of Architecture : Board of Civil Engineering  
Board of Electrical Engineering : Board of Electronics Engineering : Board of Mechanical Engineering



**RIYADH, KINGDOM OF SAUDI ARABIA**

**as mandated by Presidential Executive Order 835**

**AL TAJ International School, RIYADH, KSA**  
**November 16, 17 & 18, 2010**



PICPA UAP PICE IEE IECEP PSME FILNASA MBAP SOFIQS PAVE COMSOFIL

## PPO-CRSA SPLBE Registration Schedule

Location: Al Taj International School Gymnasium

### November 14, 2010 (8:00AM - 12:00NN)

- IECEP (Riyadh) Electronics Engineering
- PSME (Riyadh) Mechanical Engineering
- PICE (Riyadh) Civil Engineering
- PICPA (Riyadh) Accountancy

### November 14, 2010 (1:00PM - 5:00PM)

- UAP (Riyadh) Architecture

### November 15, 2010 (8:00AM - 12:00NN)

- IIEE (Riyadh) Electrical Engineering

### November 15, 2010 (1:00PM - 6:00PM)

- VARIOUS DISCIPLINE (Jeddah)

362 Total number of examinees to attend SPLBE in Riyadh .

NOTE: Examinees from Riyadh of any discipline who failed to have their registration on schedule will follow on November 15, 2010 (1:00PM - 6:00PM) with the registration of examinees of various discipline from Jeddah.



***Proud to be an Affiliate!***  
**Let us Support Philippine Professional Organization - Central Region, KSA**



# SOCIETY NEWS

## Incoming Riyadh Chapter Officers for Fiscal Year 2011



**Junry Casul**  
President



**Jojo Utram**  
VP (Internal)



**Rico Paguio**  
VP (External)



**Randel Landicho**  
Secretary



**Von Joaquin**  
Treasurer



**Fernando Nacu**  
Auditor



**Gilbert Costelo**  
PRO



**Allan Magadia**  
BOD



**Cesar Anabieza**  
BOD



**Reynante Sumagpao**  
BOD



**Lester De Guzman**  
BOD

## Incoming Jeddah Chapter Officers for Fiscal Year 2011



**Orlando Magsayo Jr.**  
President



**Gary Roldan**  
VP (Internal)



**Nathaniel John Cagas**  
VP (External)



**Alex Benter**  
Secretary



**King Laxamana**  
Treasurer



**Glen Hironondo**  
Auditor



**Alex Bedis**  
PRO



**Bonsio Noval**  
BOD



**Ceresio Dela Cruz**  
BOD



**Brian Catain**  
BOD



**Jerwin Bonus**  
BOD



# SOCIETY NEWS



## Solution Providers for the “AEC” (Architectural/Engineering/Construction) industry

**Orbit Middle East** is a leading provider of best-of-breed solutions for businesses across the spectrum of the real estate and AEC industries. Orbit Middle East offers as well a full range of Professional Services, including training, implementation assistance, and customization, with an objective to providing complete best in class solutions for project management, scheduling, estimating, quantity takeoff, construction accounting, property management, and CAD.

### Our AEC Solutions Partners

Sage Timberline Office



### Our AEC Solutions Portfolio

#### Sage Timberline Office

Sage Timberline Office, powerful financial and operations software for construction and real estate management industries—software designed to control costs and maximize revenues. Sage Timberline Office provides complete Estimating, Job Costing, Accounting, Project Management, Service Management and Property Management Solutions. [More info..](#)



On-Center's On-Screen Takeoff: Eliminate the guesswork and put an end to countless hours of manual takeoff labor. Let On-Screen Takeoff simplify your takeoff process and give you confidence in your numbers. . [More info..](#)



Meridian's Prolog provides total construction project management and collaboration for large to mid-sized organizations including general contractors, architects, engineering firms and public and private owners and operators. [More info..](#)



Bluebeam PDF Revu CAD Edition was designed to make your life easier with one-button PDF creation from within AutoCAD, Revit, SolidWorks, and direct integration with SharePoint and MS Office. [More info..](#)



Primavera offers best-in-class enterprise solutions focused on the mission critical PPM requirements of key vertical industries, including engineering and construction, public sector, utilities, oil and gas, and manufacturing.



**Capture Everything – Never Miss-a-word:** The Pulse Smartpen from Livescribe is a computer within a pen that captures handwriting and simultaneously records audio and synchronizes it to the writing. Users can simply tap on their notes to replay what was recorded from the exact moment they were writing, so they never miss a word they hear, write, or speak.



**ADAPT-Builder Platform** - A comprehensive suite of integrated design software for concrete floor systems, beams, frames, mat, and slab-on-grade foundations, reinforced or post-tensioned. The industry's only concrete design platform that incorporates the ease-of-use and productivity of the Equivalent Frame Method with the power and accuracy of 3D FEM analysis. Now also integrated with other general purpose FEM programs



Autodesk Architecture, Engineering, and Construction Solutions help to increase profitability, reduce risk, and maximize efficiencies in design, construction, and operations.

Contact us now to help you select, implement and integrate industry-specific solutions to improve your business by running it more efficiently!

+966-2-652-9230, [info@orbitme.net](mailto:info@orbitme.net), [www.orbitme.net](http://www.orbitme.net)



# FEATURES

## Pulse™ Smartpen

### Hardware

Product Design	Sleek ergonomic design with anodized aluminum housing Titanium color with silver band & black accents
Processor	ARM 9
Screen	96x18 OLED Display
Camera	High speed infrared camera (over 70 images/sec)
Storage	2GB NAND (over 200 hours recording time)* 4GB NAND (over 400 hours recording time)*  * Actual available memory will be less. Recording time varies by audio quality setting.
Battery	Rechargeable lithium (non-removable)
Audio - Record	Smartpen embedded microphone - mono recording 3-D Recording Headset - binaural or stereo recording
Audio - Playback	Embedded speaker 2.5 mm audio jack for 3-D Recording Headset
PC Connectivity	USB mobile charging cradle
Size & Weight	Length: 155 mm (6.1 in.) Width: 16 mm (0.63 in.) at top 14 mm (0.55 in.) at tip Weight: 36 grams (1.3 oz.) without cap

### Desktop Software

Livescribe™ Desktop Computer Desktop Software (download)

- Page Viewer to search, view & replay notes
- Export your notes & audio files in many formats including PDF & pen-cast
- Smartpen application management
- Gateway to your Livescribe account, store & online community
- Ability to print your own notebooks on qualified printers\*\*

\*\* Must be Adobe PostScript compatible, 600dpi, color laser printer

### Online Community

#### Web Services

My Livescribe Account  
500MB Online Storage  
Livescribe Community access for posting and sharing content

### Platform

System Software	Livescribe Paper-Based Computing Platform with Anoto Technology and Java Development Environment
Development Tools	Livescribe Platform and Desktop SDKs Livescribe Smartpen Emulator
Dot Paper	Interactive Dot Paper with Dot Positioning System (DPS)

### Bundled Smartpen Software

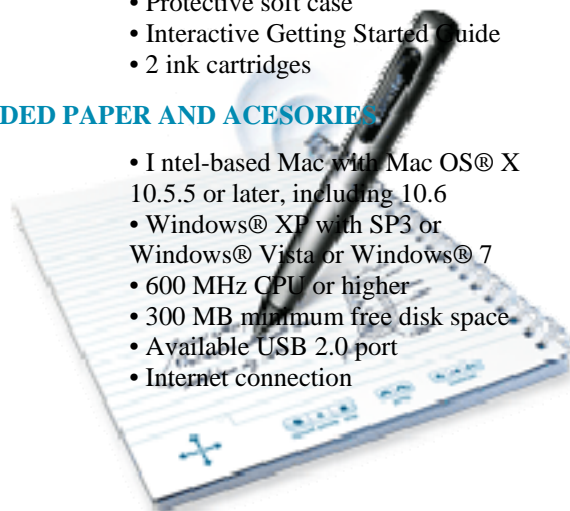
Paper Replay	Record and replay synchronized ink & audio
Paper Replay Password	Prevent access to your recorded audio
Notes	Ink capture (without audio)
Quick Record	Quick-access audio recording application
Printed Calc	Scientific calculator
Quick Calc	A simple calculator that can be launched and used on any dot paper
More Apps	Translator demo and paper piano
Other Utilities	Multi-language support, Time, Date, Storage and Battery
Nav Plus	-way navigation and menu system using preprinted or drawn plus sign
Additional Software	Additional applications are available for sale

### INCLUDED PAPER AND ACESORIES

- Dot paper starter notebook
- 3-D Recording Headset
- USB mobile charging cradle
- Protective soft case
- Interactive Getting Started Guide
- 2 ink cartridges

### INCLUDED PAPER AND ACESORIES

- Intel-based Mac with Mac OS® X 10.5.5 or later, including 10.6
- Windows® XP with SP3 or Windows® Vista or Windows® 7
- 600 MHz CPU or higher
- 300 MB minimum free disk space
- Available USB 2.0 port
- Internet connection





# FEATURES

## What Are Cost Engineering, Quantity Surveying, And Project Management?

Cost Engineering and Quantity Surveying have similar and highly overlapping functions. Quantity Surveying relates more to building design and construction, while Cost Engineering relates more to engineering projects and processes. However Cost Engineers and Quantity Surveyors commonly work in both areas. Cost Engineering and Quantity Surveying differ primarily in the route taken to professional qualification, not to any substantive difference in the two professions.

Project Management overlaps both Quantity Surveying and Cost Engineering in the project cost management area to some degree but most Project Management functions are quite different from those of Cost Engineering and Quantity Surveying.

The following document compares the similarities and differences between the three professions, in terms of cost management matters only. A definition of entire scope of Project Management activity is not intended, nor should it be inferred, from this document.

### 1. Cost Engineering (CE) and Quantity Surveying (QS)

Functions:

a. To provide independent, objective, accurate, and reliable capital and operating cost assessments usable for investment funding and project control.

b. To analyze investment and development for the guidance of owners, financiers and contractors.

CE and QS include:

- estimates of capital or asset costs including development costs;
- estimates of operating and manufacturing costs through an asset's life cycle;
- risk assessment and analysis;
- trending of scope and cost changes;
- decision analysis;
- financial analysis (eg. net present value, rate of return, etc);
- project cost control;
- appraisals of existing assets;
- project analyses, databases, and benchmarking;

- planning and scheduling;
- setting studies, etc.;
- productive and investment needs assessment;
- facility management needs assessment;
- project feasibility and budget assessment;
- cost management;
- procurement management;
- contract administration;
- whole-life appraisals;
- quality audits;
- value management;
- dispute resolution.

These are typical functions of the CE or QS but not all practitioners in the field perform all of these functions. Many specialize in a limited number of these functions.

The CE or QS provides information by:

- estimating costs and analyzing risk,
- trending and controlling costs and assessing design, and
- documenting costs.

These are interdependent and feed back to each other. They include:

- analyzing cost,
- assessing design,
- assessing risks,
- trending costs,
- advising clients,
- managing cash flows,
- preparing feasibility analyses, and
- assessing life-cycle costs.

### 2. Project Management (on cost management matters only) (PM)

Function: To set project objectives in line with the purpose(s) set up by general management and to manage the resources necessary to meet the objectives.

PM should:

- ensure that a realistic reference (scope, cost, time) is set up for further control
- and is in line with the objectives;
- ensure that appropriate management tools are set up to help the team control the project;
- create a cost-minded atmosphere within the team;
- make decisions on what should be done in case of variance;
- ensure that the project objectives

remain in line with business needs;

PM delivers the project by:

- managing resources,
- delegating tasks,
- making decisions,
- receiving information,
- setting goals,
- motivating people, and
- understanding cost engineering and quantity surveying. - end

Reference:

<http://www.icoste.org/whatare.htm>

## Recruitment Agencies

*Contributed by Eric Gonzales*

UNITED GLOBAL MANPOWER RESOURCES, Inc.

2120 F & C Building,  
Senator Gil Puyat Ave.,  
Pasay City, Philippines  
Tel. # (632) 834-7932 / 834-7248  
Fax # (632) 834-7255

E-mail: [ugmr\\_inc@yahoo.com](mailto:ugmr_inc@yahoo.com)

Contact Person: Beth Corral

EAST WEST PLACEMENT CENTER, INC.

RIZZ 1059 Metropolitan Ave.  
Makati City, 1200 Philippines  
Tel. # (+63 2) 895-6911 (11 lines) /  
896-8203 Fax # (+63 2) 896-5229 /  
895-3585

Website: [www.eastwest.com.ph](http://www.eastwest.com.ph)

E-mail: [eastwest@eastwest.com.ph](mailto:eastwest@eastwest.com.ph)

Contact Person: Arlene Siaron

CONCEPT PLACEMENT RESOURCES, INC.

2ND Floor Lising Building  
# 2301 Pasong Tamo Extension  
Makati, Philippines

TEL. 892-1172 / 815-4145

Cellphone – 0917-891-8246

Contact Person: Ms. Paulette L. San Agustin

Or :

Look for Ms. Shiela Vela  
CP # +639178139124

AU MANAGEMENT

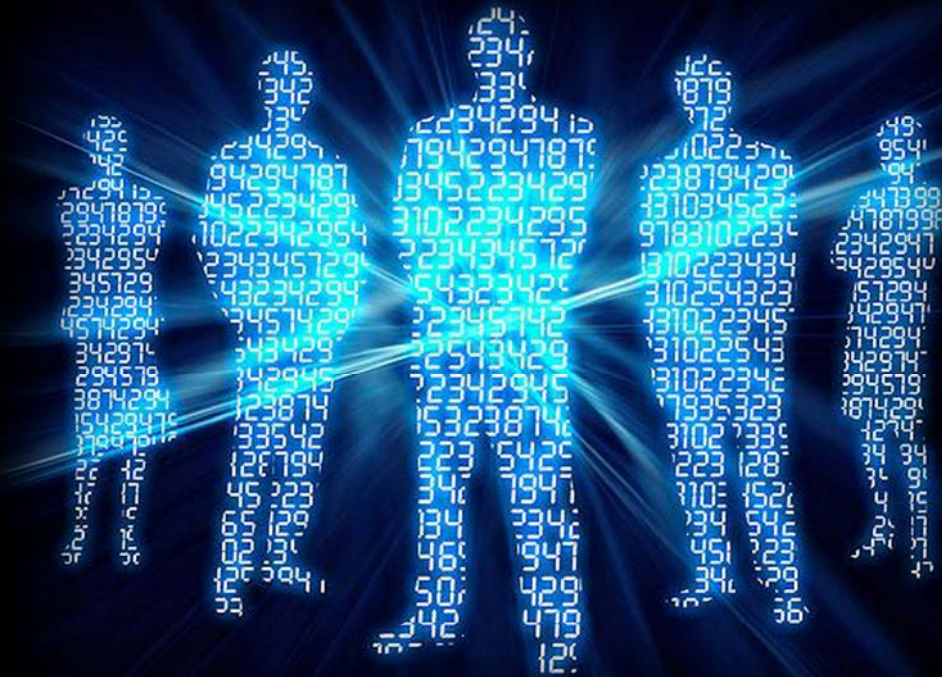
1520-24 A. Mabini St.,  
Ermita Manila, Philippines  
+639175284085

E-mail: [auglobalworkers@yahoo.com](mailto:auglobalworkers@yahoo.com)

Contact Ms. Amelita N. Guinto

- end





## Be one of us...

"Our mission is to enhance and boost the capabilities and qualifications of every member by providing professional trainings and seminars related to all aspect of quantity surveying profession, thereby developing our potentials and self confidence to compete in this line of work.

SOFIQS Inc. is also tasks to provide assistance and to support its members in-terms of job opportunities, financial assistance and socio-economic interaction within the community.

And ultimately being a multi-disciplinary organization, we envisioned to become a globally competitive Quantity Surveyors, admired by the organizations we served and a benchmark of quality services and expertise."

- Engr. Eddie Pilaspilas, CE | Founder & National President

## Be a member now.



# MEMBERSHIP

## Welcome, New Members!

Individuals interested in becoming a member, you may email us at:  
[www.sofiqs@yahoo.com](mailto:www.sofiqs@yahoo.com)  
[www.sofiqs\\_riyadh@yahoo.com](mailto:www.sofiqs_riyadh@yahoo.com)

Once again, congratulations to our new members, we look forward to your active participation in our Society's activities.

### March 2010

*Saudi Oger Ltd.*  
Willy C. Amok

### September 2010

*Saudi Oger Ltd.*  
Yaser A. Abdulmajid  
Judd Arthur F. Agcaoili  
Frederick F. Alla  
Juvi Mar C. Ancheta  
Christopher R. Banibane  
Herneil C. Barco  
Jedan H. Biñas  
Sergio B. Boligor, Jr.  
Jeffrey B. Busilan

Rayman S. Cordon  
Marlon B. De Guzman  
Juan B. Gannad  
Eugel M. Gueco  
Borris C. Ignacio  
Al-Baqir M. Jupi  
Roy V. Mancol  
Ahamad Khourshed H. Paris  
Christopher L. Pascua  
Arlee John C. Saquilayan  
Julaptri A. Susulan

*Architectonica Consulting Engineers*  
Leonardo B. Boticario

*DAR Al Riyadh Consultants*  
Hussein Z. Datu  
Bernardo R. Hilario  
Ramon Diosdedit S. Saquibal

*Abdallah and Partners for Studies and Engineering Consulting*  
Dino M. Doliente  
Elviro C. Marabulas, Jr.  
Reynante F. Romales

*Contracting and Construction Ent. Ltd.*  
Roderick G. Eugenio  
Federico R. Garcia, Jr.  
Efren L. Labay, Jr.

*TVTC*  
Jamester M. Fayofay  
Rudymar A. Gulam

*Saudi Bin Laden Group*  
Archer B. Jarales  
Orlando B. Jarales, Jr.  
Philip R. Yunting

*El-Seif Engineering and Contracting Co. Ltd.*  
Rogelio A. Lejat

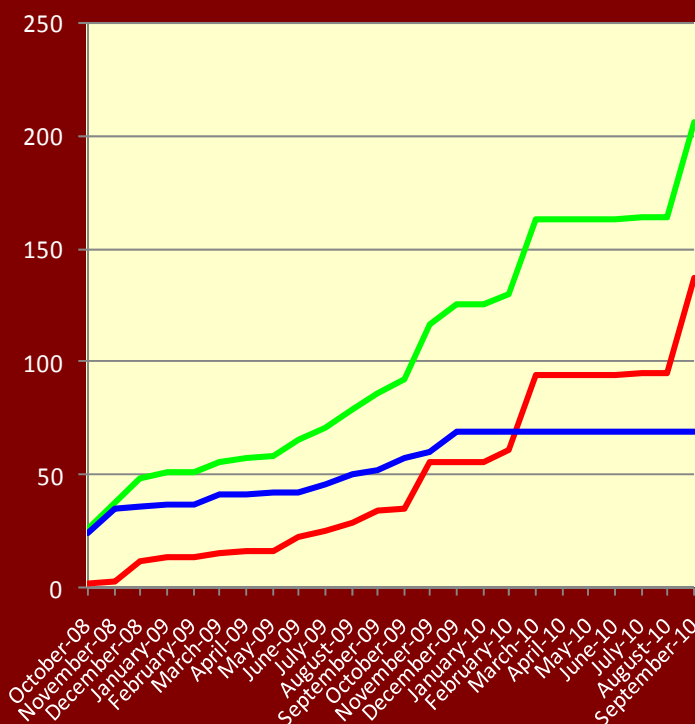
*Mawarid Company*  
Steve L. Marcial

*Ministry of Defense and Aviation*  
Cesar M. Meriño  
Reynaldo P. Sumanoy

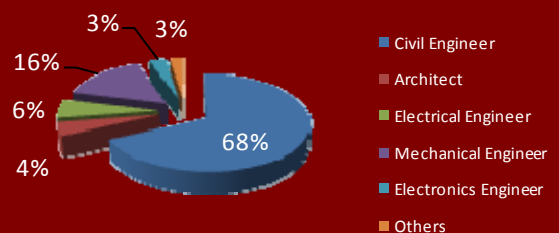
- Nothing follows -

## Membership Statistics

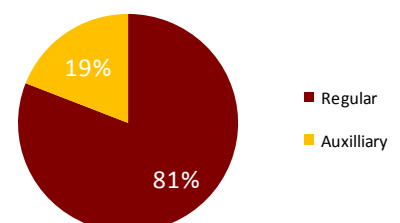
### Membership Statistics - Total No.



### Membership Statistics - by Field



### Membership Status





# FY 2009-2010

## Jeddah Chapter Officers

**Ric Dimarucut, EE**  
Chapter President

**Brian Catain, CE**  
Vice-President for External Affairs

**Orlando Magsayo, CE**  
Vice-President for Internal Affairs

**Gary Roldan, CE**  
Secretary

**Bonsio Noval, CE**  
PRO

**King Laxamana, ME**  
Treasurer

**Alex Benter, CE**  
Auditor

Board of Directors

**Joselito Clamor, CE**  
**Ceresio Dela Cruz, ME**  
**Randel Landicho, CE**  
**Jerwin Bonus, UAP**

## National Board Officers

**Eddie Pilaspilas, CE**  
National President

**Filmore Mariblanca, ME**  
Vice-President for External Affairs

**Julito Tamano, EE**  
Vice-President for Internal Affairs

**Ricardo Candaza, Jr., CE**  
Vice-President for Technical Affairs

**Allaine Santos, ME**  
Secretary

**Edherson Nanalis, EE**  
PRO

**Reginald Sanut, CE**  
Treasurer

**Jovencio Alontaga, ME**  
Auditor

Board of Directors

**Nilo Musni, ME**  
**Armando Santos, ME**  
**Markcis Higante, ME**  
**Juleous Balila, ME**

## Riyadh Chapter Officers

**Eleazar Mendoza, CE**  
Chapter President

**Esteban Portes, Jr., CE**  
Vice-President for External Affairs

**Junry Casul, CE**  
Vice-President for Internal Affairs

**Francis Gonzales, CE**  
Secretary

**Fernando Nacu, UAP**  
PRO

**Herbert Bernal, UAP**  
Treasurer

**Allan Magadia, CE**  
Auditor

Board of Directors

**Elmer Dulay, CE**  
**Julius Duno, EE**  
**Mark Lloyd Flores, CE**  
**Rommel Cruz, Arch.**



## 2nd Annual Convention

**Host Chapter - Riyadh**

Holiday Inn Hotel

November 26, 2010

*“Rising to the Challenge, Sustaining Filipino Excellence”*